

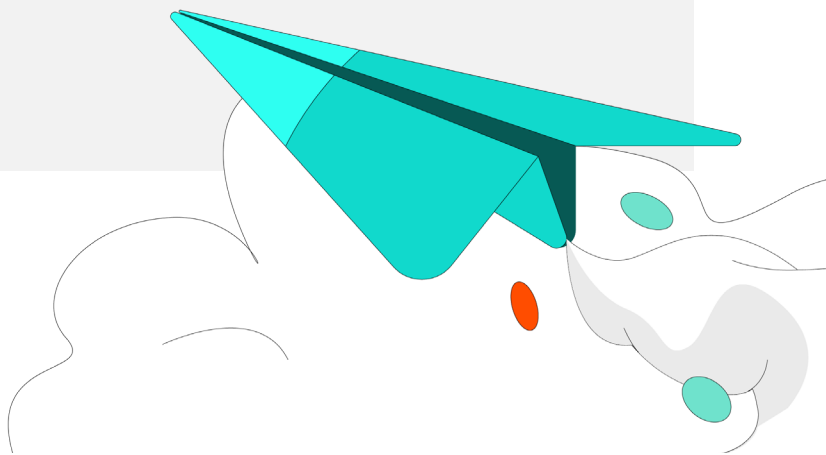


PAX A920 wallee

User Manual

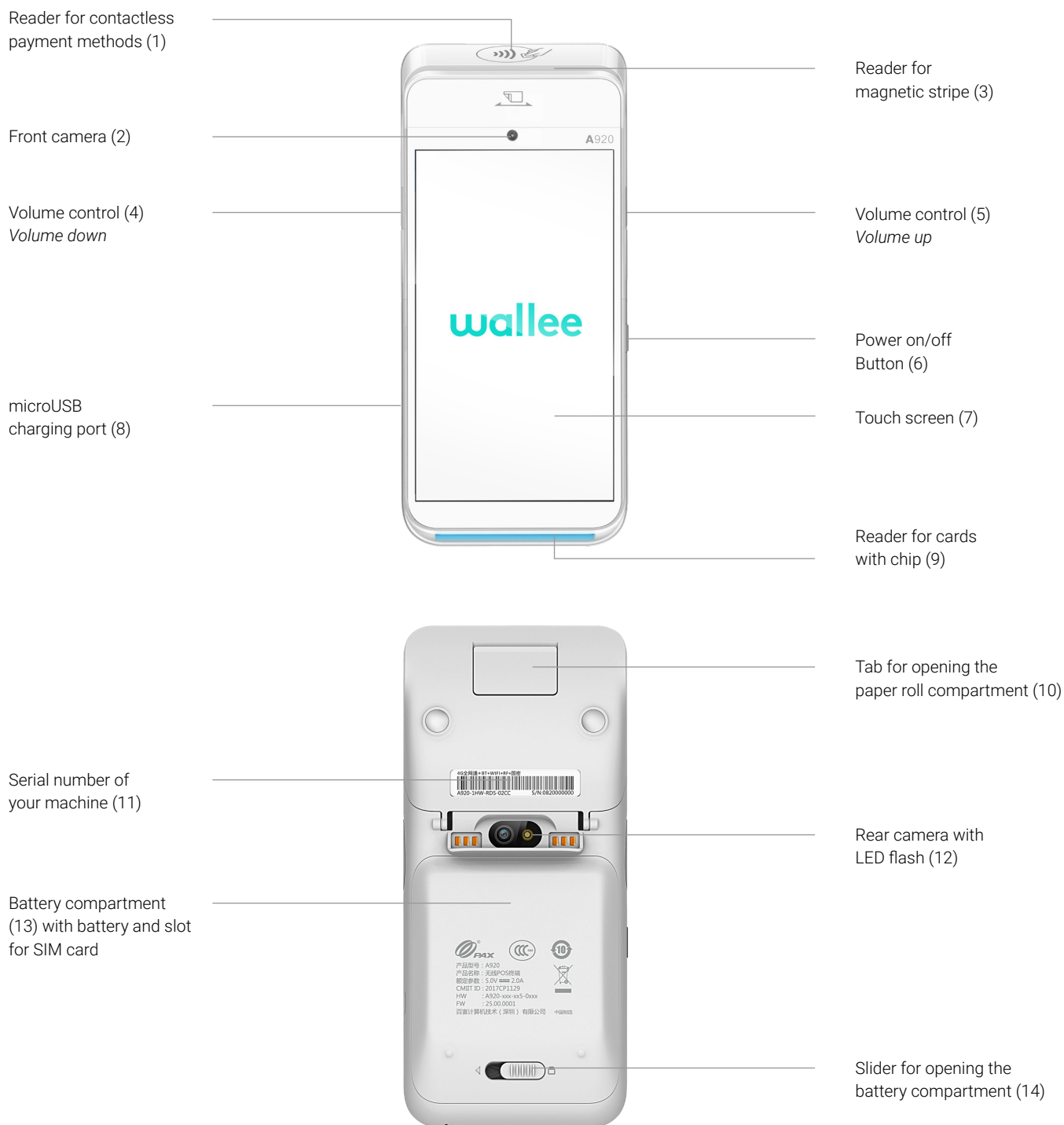
User manual in English for the basic functions of the PAX A920 wallee.

Contents: **Overview of the device / Delivery contents / Set-up / Accepting payments / Further settings**



Overview of the device

With the **PAX A920 wallee**, you have chosen a top-quality terminal based on Android that offers you numerous possibilities with intuitive operation. With its integrated reader for contactless payment methods, receipt printer, card reader, cameras and much more, it is the perfect choice for accepting modern payment methods in your business.



Delivery contents



Device
PAX A920 wallee



Charging base
L920-BC



Adapter + cable
micro-USB / USB



Setup
paper roll

Setup

The **initial setup and installation** of your new PAX A920 wallee is very simple. In just a few steps, your device is ready to handle your payment transactions. If you have any questions during setup, our support team will be happy to help.

1. Insert the paper roll

First open the paper roll compartment on the back of the machine. Pull the tab on the top of the machine. Place the paper roll in the tray so that the front of the paper comes out the bottom of the roll and leave about 1 cm overhang. Close the tray. Paper roll dimensions:

57mm width, max. 40mm diameter.

2. Charging the device



Before using the unit for the first time, it should be fully charged. To do this you can charge the terminal directly via the USB cable supplied. Use the the microUSB port on the left side of the unit (8). We recommend using the charging station.

3. Switching the device on / off

Press and hold the Power On/Off button (6) for 2 seconds. To switch the unit off again, press the same button until you see a button until you see a selection menu with four options (Flight mode, Silent mode, Restart, Power off) and select the option and select the option „Power off“.

4. Set up Wi-Fi® / WLAN

Once your device is fully charged and switched on, you must first **set up your Wi-Fi® connection before you can enter the activation code** (step 5).

- Select the **menu icon** ≡ in the upper left corner
- Select „**Device settings**“  and enter your merchant password if necessary
- Select „**Configuration WiFi**“ 
- Select your Wi-Fi® / WLAN network, enter the password of your of your network and confirm
- Once you are connected to your WLAN, return to the start screen and return to the home screen and continue with the activation of your account (step 5).

4G data connection OPTIONAL

If you have chosen the PAX A920 wallee with SIM card, you can also use the mobile data connection for activation. The SIM card is pre-installed when you switch on the device and is ready for use immediately.



5. Activate account

As soon as you have a WIFI connection (or mobile data connection), you can activate your account. Return to the start screen and **enter the activation code that you will receive from wallee. You will find this code in your „Space“ in the wallee Portal under „Terminals“.** The current configuration will automatically be loaded onto the device. Please do not interrupt this process until you see the start screen again. If you have any questions our support team will be happy to help you.

Perfect!


You have completed the initial setup of your PAX A920 wallee and can now start using your wallee terminal to accept modern payment methods.

Accept payments

Many functions on your PAX A920 wallee are intuitive to find and easy to use thanks to the modern touchscreen. Below you will find the **basic functions for processing payments directly via the terminal (stand-alone use)**. For integration into your POS system, you can obtain application instructions directly from the respective manufacturer.


Accept a payment

To accept a payment or make a sale on your device on your device:

- Click on the **Card icon**  on the home screen
- Enter the payment amount and confirm
- If the tip function has been activated, you will see a second input window in which you can enter and confirm the tip **OPTIONAL**
- Now your customer can present the card or contactless payment method
- The transaction will be completed and a receipt will be printed

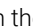

Manual entry of payment details

OPTIONAL

Accept a new payment by clicking on the **Card icon**  on the home screen and entering the payment amount. Then click on **„Manual entry“**. Your customer then has the opportunity to enter his card details (card number, security code CVV, validity). Finally, the total amount is displayed once again and asked for confirmation. (The functionality for manual entry is optional and must be activated by wallee).


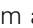
Refund a payment

To refund a payment to an existing card on your device:

- Click on the **menu icon**  and enter your merchant password when required
- Select the menu item **„Credit“**  and enter the merchant password if necessary
- Enter the total amount to be refunded
- Now your customer can present the card or contactless payment method to which the refund should be made

Refund for manual entry

OPTIONAL

Click on the **menu icon** , enter your merchant password, select the menu item **„Credit“**  and confirm again with your merchant password if necessary. Select **„Manual entry“**. You can then enter the card details of the card to which you want to refund (card number, security code, CVV, validity). Finally, the total amount will be displayed and you will be asked to confirm. (The manual entry function is optional and must be activated by wallee).

Daily closing

You can call up all individual receipts, reports and much more at any time conveniently in your account in the wallee portal. The daily statement is created on your terminal:

- Select the **menu icon** ≡
- Now select „**Reports**“ 📄 and then „**Daily closing**“ 🗒️

The device starts printing the report and the transactions for the day. The day's transactions are sent to the merchant. On the report you will find the number of transactions for the day, the daily total of tips and the daily revenue. The reports should be generated every day!

Cancel the last transaction

The last transaction can be cancelled very easily. To do this, you need the means of payment with which the payment was made:

- Select the **menu icon** ≡
- Select „**Cancel**“ ✕ from the menu
- Enter your merchant password

Payment reservation (Pre-auth)*

If required, you can pre-authorise a means of payment or reserve the payment:

- Select the **menu icon** ≡
- Now select the area „**Reservations**“ 🔒 and then „**Reservation**“ 🔒
- Enter the amount and present the card or contactless payment method (or optionally enter the card details manually, as required).

Adjust a payment reservation (Incremental auth)*

To adjust an existing payment reservation:

- Select the **menu icon** ≡
- Now select the area „**Reservations**“ 🔒 and then „**Increase Reservation**“ +
- Enter the amount by which you want to increase the existing reservation
- Now enter the Acquirer Id (Acq-Id) and the corresponding relevant Transaction Reference Number (Trx. Ref-No) and confirm

Finalise a payment reservation (Pre-auth compl.)*

To complete an existing payment reservation:

- Select the **menu icon** ≡
- Now select the area „**Reservations**“ 🔒 and then „**Booking Reservation**“ ✓
- Enter the Acquirer Id (Acq-Id) and the Transaction Reference Number (Trx. Ref. No.) of the original reservation and confirm

Cancellation of a payment reservation (Pre-auth cancellation)*

To delete an existing payment reservation:

- Select the **menu icon** ≡
- Now select the area „**Reservations**“ 🔒 and then „**Cancellation Reservation**“ ✕
- Enter the Acquirer Id (Acq-Id) and the Transaction Reference Number (Trx. Ref. No.) of the original reservation and confirm

*Note on Pre-auth functions

The functions for pre-auth / payment reservations are only available to certain industries, e.g. hotels, and must be approved by your acquirer.

In order to complete, adjust or cancel the payment reservation you will need the **Acquirer Id (Acq-Id)** and the **Transaction Reference Number (Trx. Ref-No)**. Make sure that you make a note of these numbers or that you keep the receipt of the reservation.



Further Settings

Here you will find an overview of other important settings. Additional information your PAX A920 wallee, all functions and options as well as accessories can be found on our website at www.wallee.com.

Changing the Merchant Password

If required, you can also change your merchant password of the terminal directly via the terminal. As a general rule we recommend that you update your merchant password via the wallee portal.

However, to change the merchant password directly via the terminal proceed as follows:

- Select the **settings icon** ⚙️
- Now select the area „**Change password**“ 🔒 and confirm with your current merchant password
- Now enter a new password and confirm by pressing confirm with Enter / the green button

This document is for information purposes only. PAX and the PAX logo are trademarks or registered trademarks of PAX Technology Limited in China and/or other countries. Other trademarks or trade names are the property of their respective companies. © 2022 Wallee AG. All rights reserved.

Any questions?

Simply contact us via our Terminal Support Line and a Product Genius will be happy to advise you on all your questions. You can also send us an email at info@wallee.com. Get in touch with us:

Wallee AG
Neuwiesenstr. 15
CH-8400 Winterthur

Switzerland / International
+41 (0)44 505 13 60
wallee.com/support

Status 04/2022. Subject to changes and errors.

wallee.com PAX A920 wallee | Manual T5.2.EN-220414-01 | 6

